

reveal[®]

CLEAR ALIGNERS

The Next Generation Clear Aligner Solution

 HENRY SCHEIN[®]
DENTAL | ORTHODONTICS

 Rely on Us[™]

Reveal® Clear Aligners

by Henry Schein® Orthodontics™

Many of your patients already know that they could benefit from some minor orthodontic treatment.

As their dental care provider, you are uniquely positioned to offer your patients the safe, affordable, and doctor-supervised treatment alternative: **Reveal Clear Aligners**.

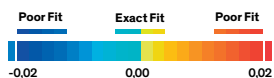
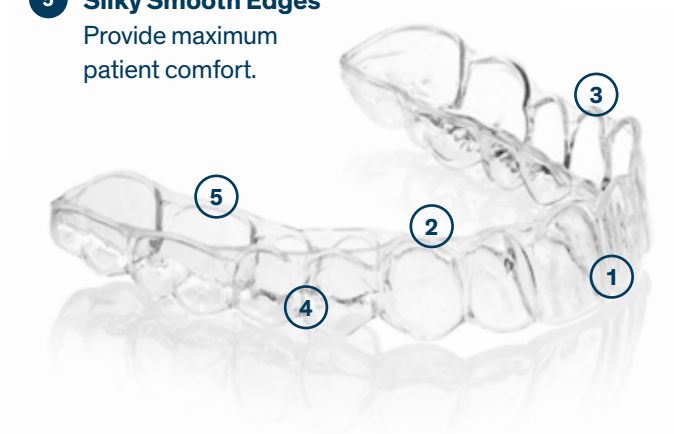
Did you know that there are more than **two million Internet searches** for clear aligner treatment every month?

THE ALIGNERS

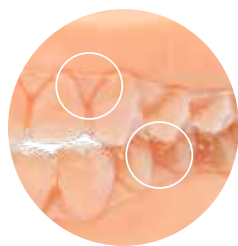
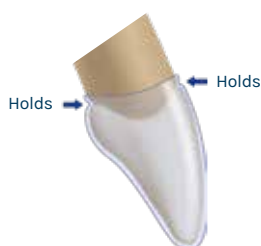
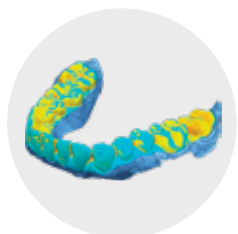
- 1 Exceptional Fit**
Uniquely captures all available tooth and soft tissue anatomy.
- 2 Optimized Trim**
Contoured to capture the interproximal and gingival margins, further enhancing control independent of attachments.
- 3 ClearWear™ Material**
Precise force levels for comfort and speed of treatment.

- 4 Crystal Clear**
ClearWear Material is guaranteed not to stain or discolor.

- 5 Silky Smooth Edges**
Provide maximum patient comfort.



*Fit test: Independent 3rd party lab on static initial aligners



SIMPLIFIED WORKFLOW

Superior fit of **Reveal Clear Aligners** shown in high resolution lab analysis. Dark red and dark blue indicates wide gaps, thus a need for attachments. Yellow and light blue show close contact and precise fit.

Reveal's precision fit reduces the need for complicated orthodontic attachments. The process is backed by proven results, so you can offer **Reveal** to your patients with full confidence in the treatment outcome.

Reveal Clear Aligners feature precision fit and optimized trim heights to capture hard and soft tissue anatomy for exceptional control with fewer attachments.

Why become a Reveal Provider?

COMPETITIVE PRICING

Reveal Clear Aligners offer significant savings compared to the leading in-office aligner brand. Your patients will love having a premiere aligner, at a more affordable price.

Ready to leverage the trend and offer clear aligners in your practice?
Reveal is ready to help.



REVEAL TREATMENT TIERS

Express	1–10 sets of aligners
Lite	11–20 sets of aligners
Standard	21–30+ sets of aligners

Each case includes one post-treatment retainer.

UNRIVALED SUPPORT FROM HENRY SCHEIN



With decades of experience as a trusted global leader in dental care, we offer the solutions and resources your practice needs to thrive. We ensure your success in **Reveal Clear Aligners** treatment by providing:

- In-office training to help you incorporate **Reveal** into your practice and quickly gain proficiency
- A convenient online portal for case submission, treatment plan review, and treatment tracking to streamline the process and save you time
- Seamless integration into any workflow—**Reveal** works with both digital scans and traditional PVS impressions
- A comprehensive support system to guide you through each phase of the treatment process



Let Reveal help your practice grow. Get started today!

Contact your *Henry Schein Orthodontic* Sales Specialist or talk with an Aligner Customer Care Representative for a demo or to establish your customer account. Call **036 - 53 58 600** or email ortho@henryschein.nl

Visit revealclearaligners.eu to learn more. Follow us on  

reveal[®]
CLEAR ALIGNERS

 **HENRY SCHEIN**[®]
DENTAL | ORTHODONTICS

Rely on Us[™]