

reveal[®]

CLEAR ALIGNERS

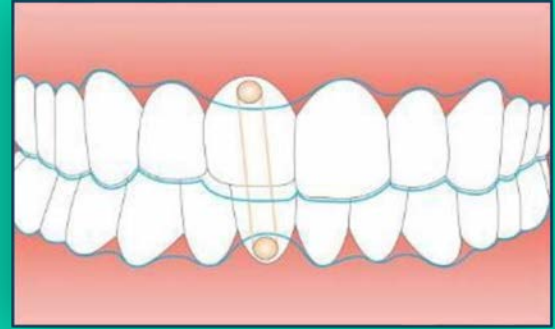
Elastic Button Technique Guide

Index

- 1 What is EBT?
- 2 How to apply EBT
- 3 Two techniques
- 4 Recommended products

1

What is EBT?



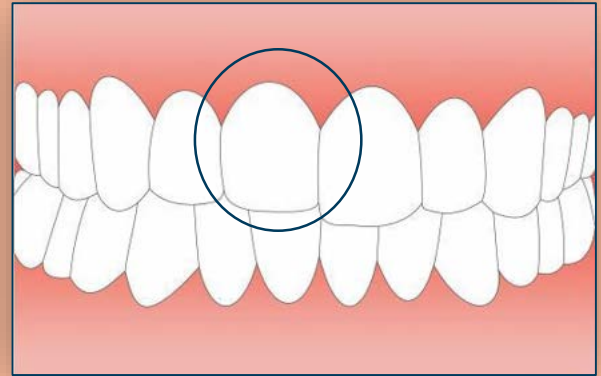
Elastic Button Technique (EBT) may be used with aligners for **vertical / extrusive movement** and **unpredictable / complex** movements, for example de-rotation of a cylindrical shaped tooth and root parallelism around extraction space.

EBT reinforces movement that is already incorporated in aligners.

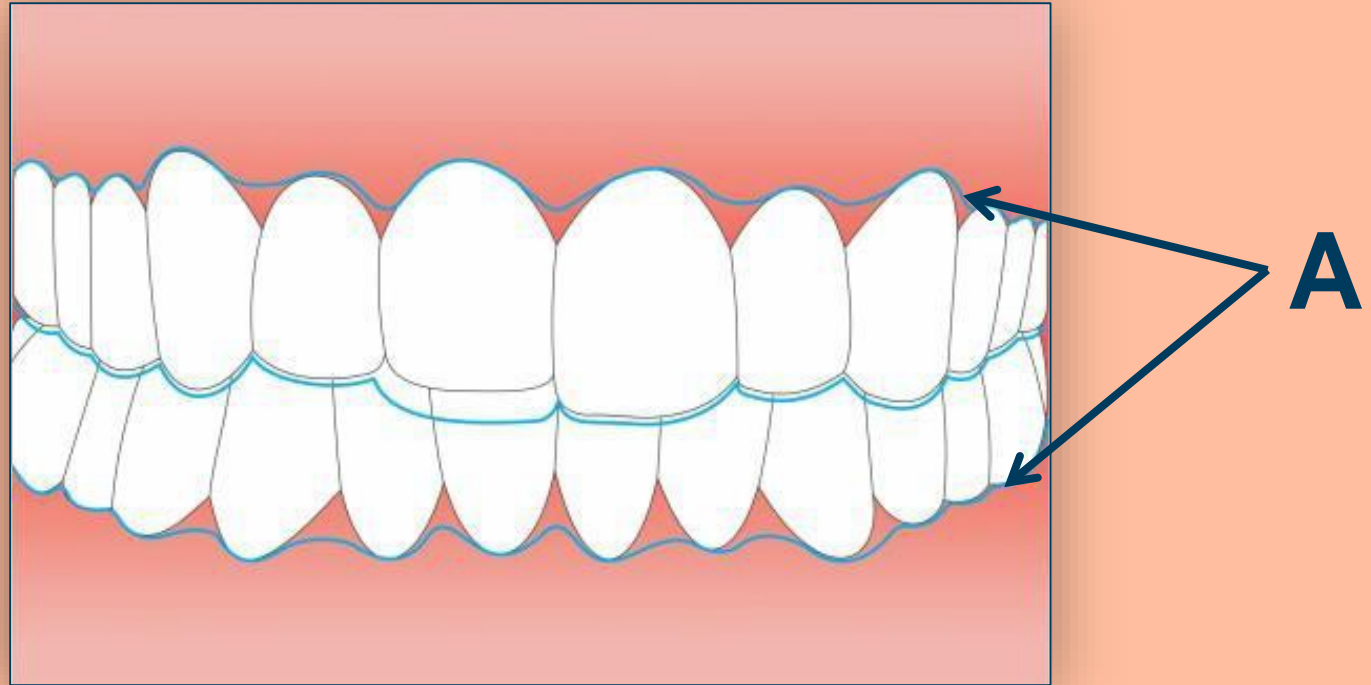
2

How to Apply EBT

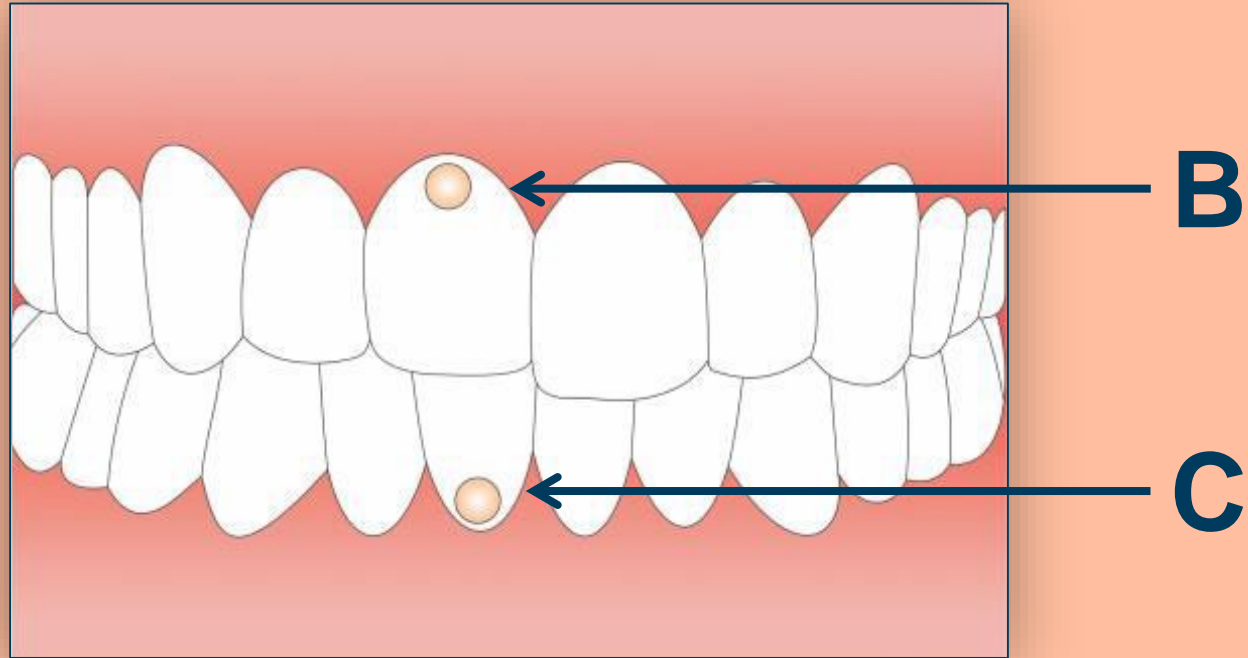
A) Upper right central incisor needs extrusive movement



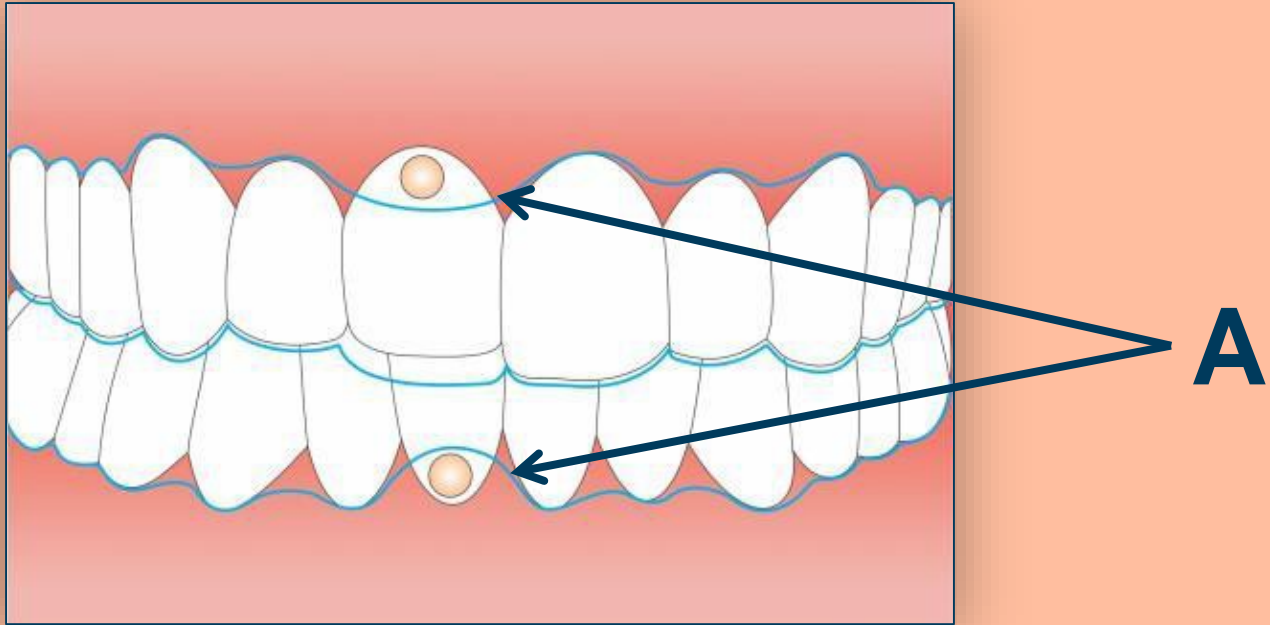
B) The blue line A shows patient wearing an aligner. A receptacle is given for upper right central incisor to accommodate extrusion movement



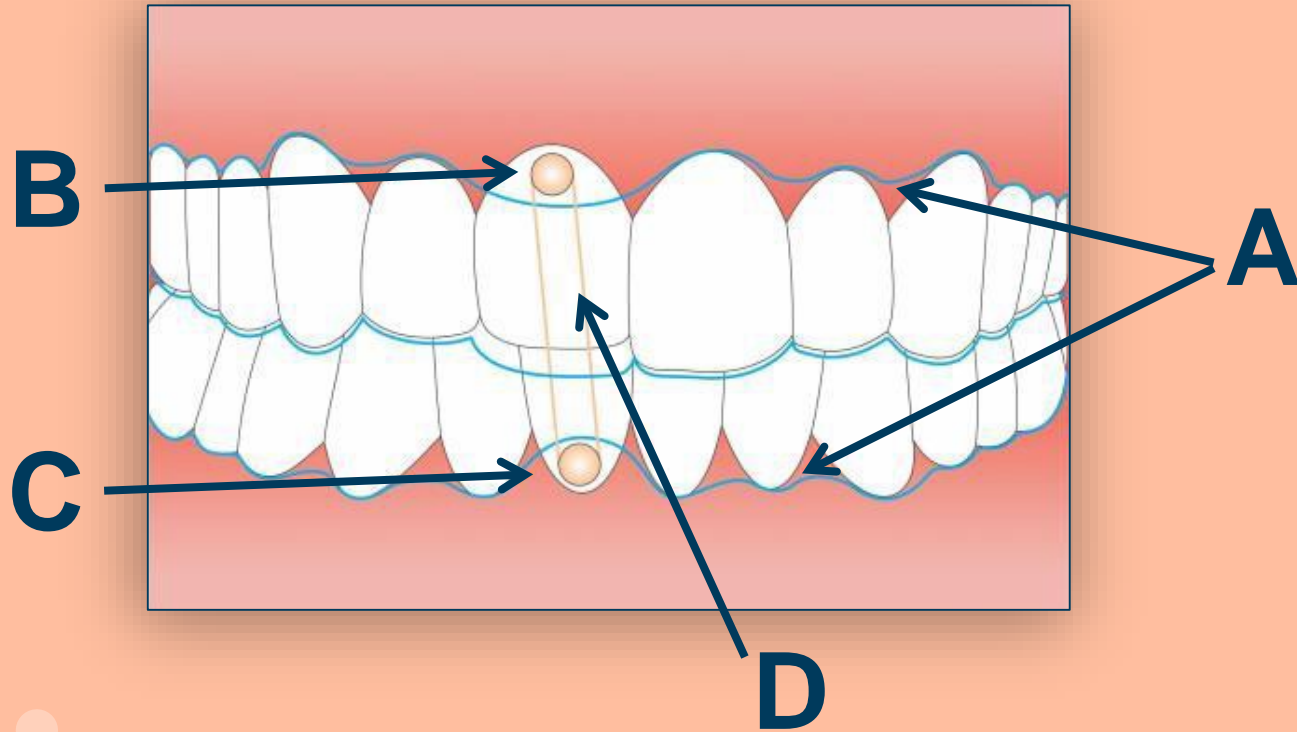
C) Composite buttons are placed on upper right central incisor B and lower right central incisor C



D) Aligners are trimmed to accommodate the composite buttons, as shown by blue line A



E) Elastic is hooked from one button to the other, as shown by D





Central incisor
requiring extrusive
movement



Space provided
in aligner set

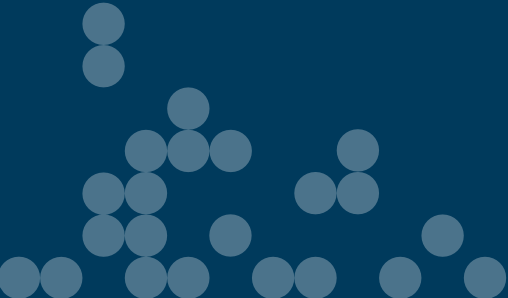




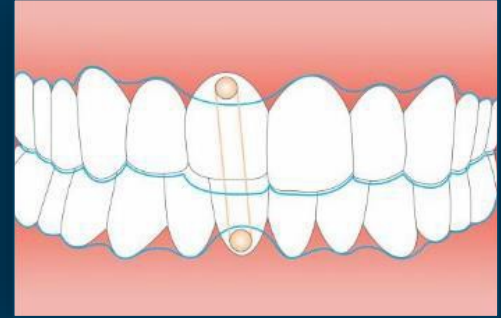
Etch and bond
button on
mandibular and
maxillary teeth

3

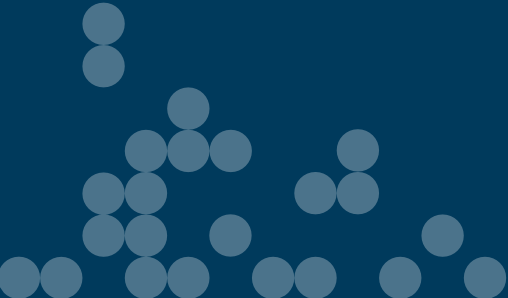
Two Elastic Button Techniques



Elastic wraps around maxillary and mandibular buttons. Buttons are placed on the facial side of each tooth.



Buttons are placed on the lingual and buccal of the same tooth and the elastic is wrapped around the tooth – boot strapping



4

Recommended Products

Freddy Ceramic Button - **925761**

HS Natural Elastic Amber Light Force 2oz 5/16" - **5721053**

Heliosit Orthodontic Bonding - **4268277**





ortho@henryschein.nl

www.hsdorthodontics.eu

036 53 58 600